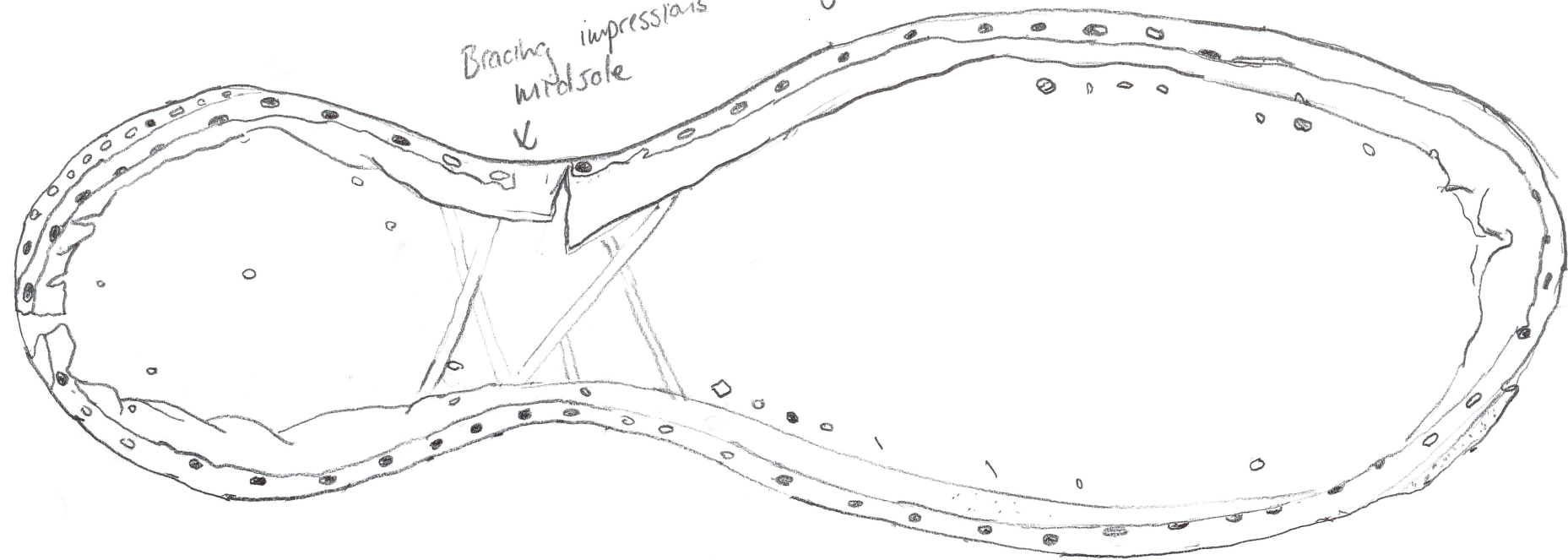


Band intact - glued in place

Bracing impressions on gram up
↓
Midsol



Top View

Gram up Midsol,
Delaminated

Vasa 4/8/2022

SAP ©

#08070

Bottom Unit - Banded Shoe

UK Size 4

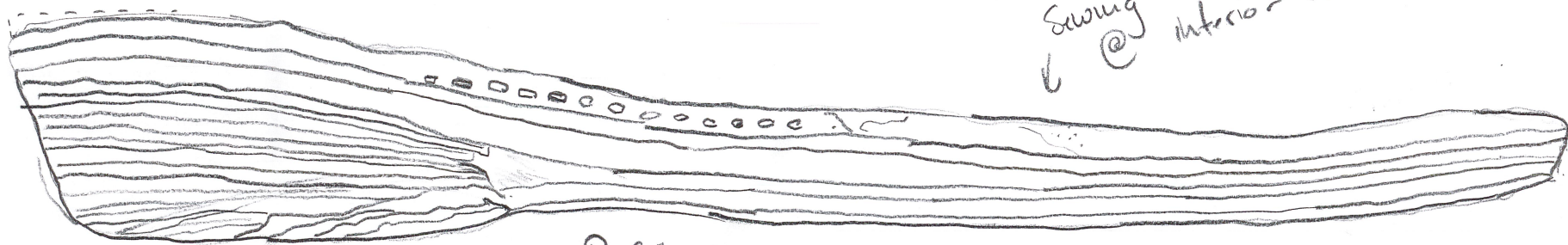
9 1/2" x 3 1/4"

1 of 2

ms/w-L?

↑
1 1/4"
↓

↓
Sewing threads present
@ interior of sand

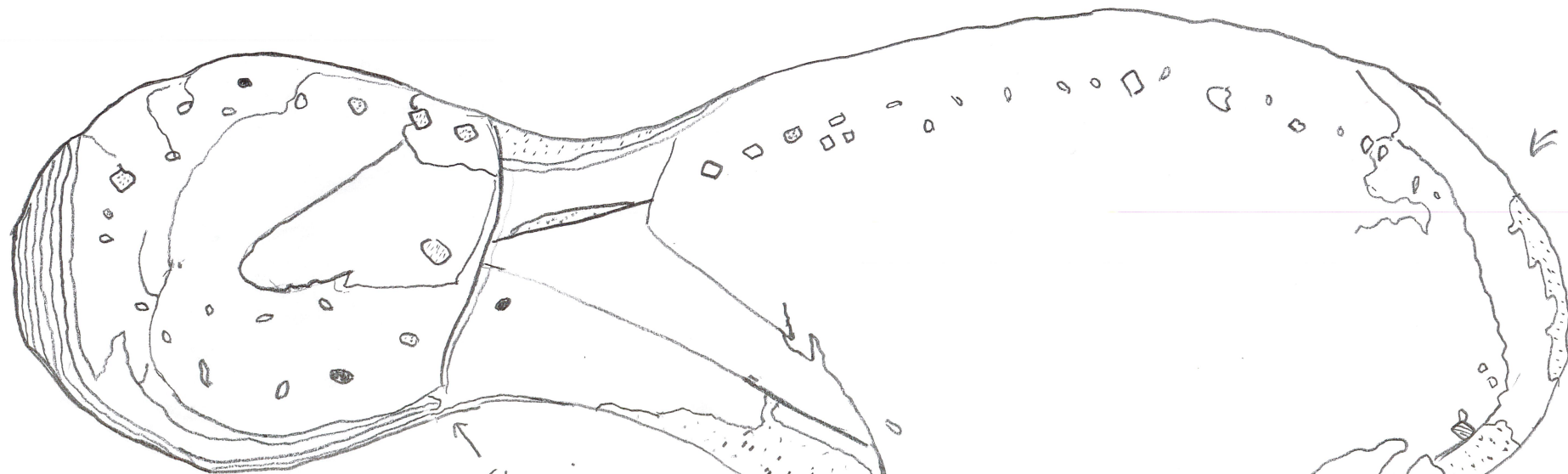


Profile View

INCH

- Two midsols - heavily delaminated.
Hard to gauge actual thickness.

- stitching where visible at 6-7"



← Pegged on Repair Patch

Bottom View

Patch heel Pegged On over
outer sole. Repair

↓
Slice in
sole from trimming
heel

Vasa 4/11/2022

SAP@

08070

Bottom UNIT -
Rounded Shoe

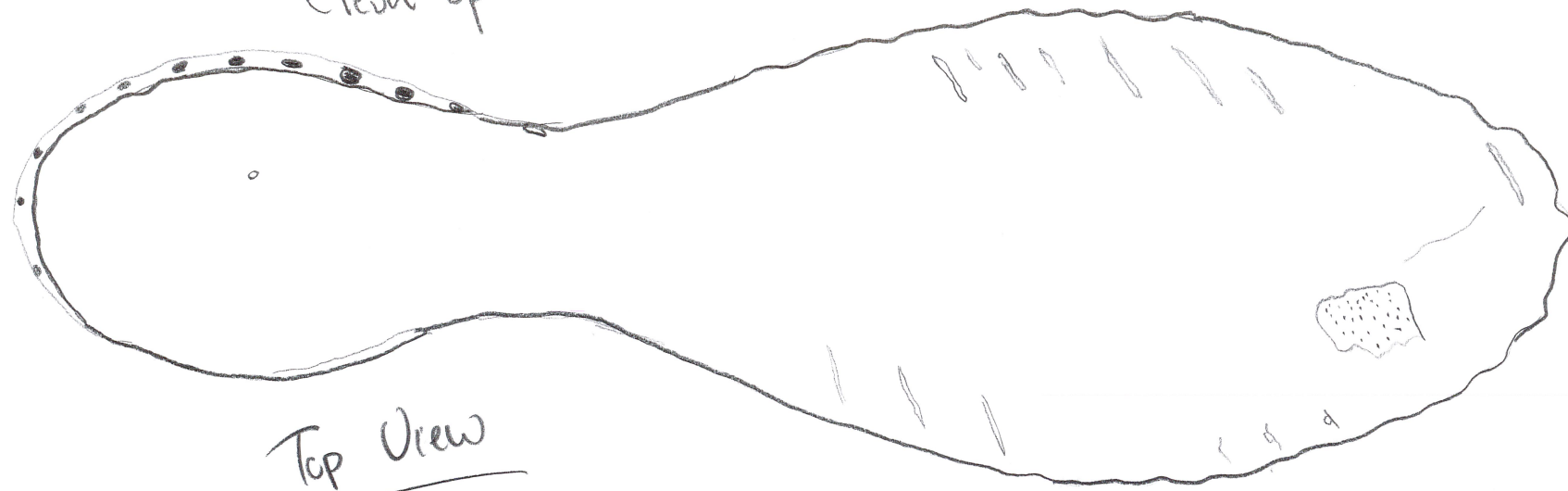
Goes with drawing
from 4/8/2022

(9 1/2" x 3 1/4")

2 of 2

Flesh-up.

Odd slices in forepart on surface
of insole




Top View

- 6/7 oz Insole
Flesh up. Quite 'fuzzy'
and partially delaminated.

- Nearly intact sewing threads
around whole of insole

- Moose / Rembour?

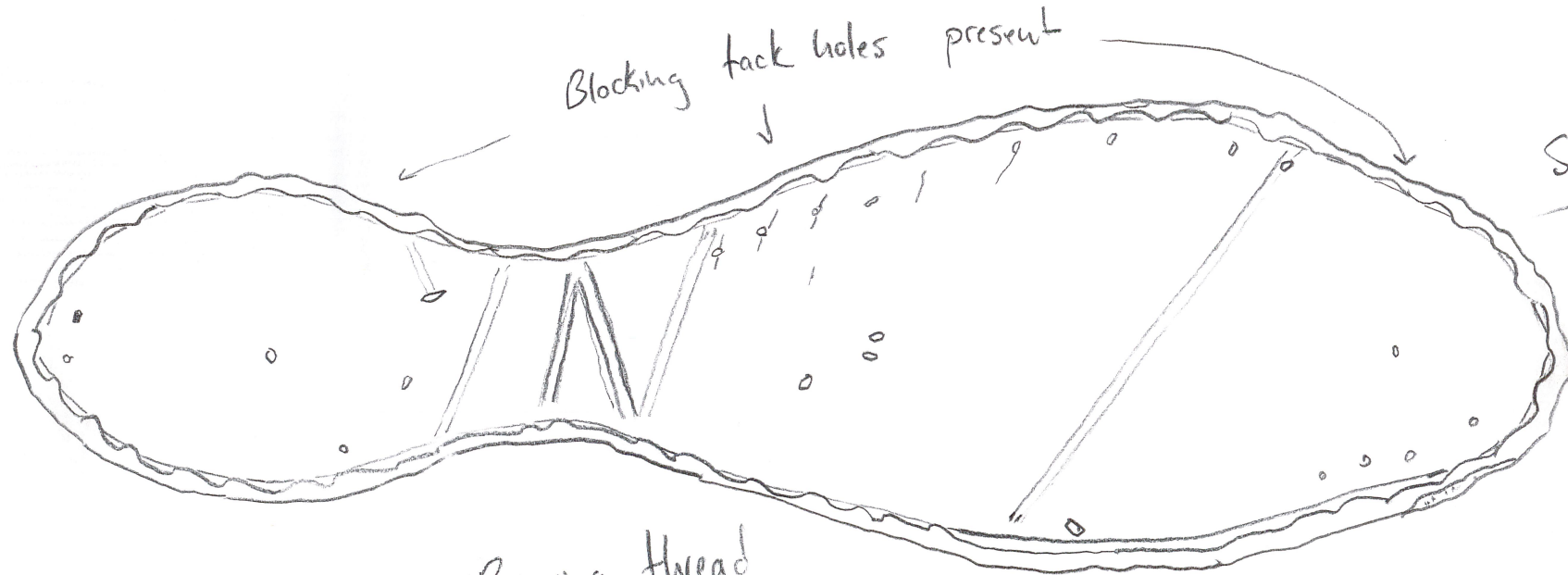
m-s/w-L?

Sq Holdfast 

Thread channel impressed
into grain directly behind
holdfast.

1 INCH

Blocking tack holes present



Bracing thread
impressions in grain.

Bottom View